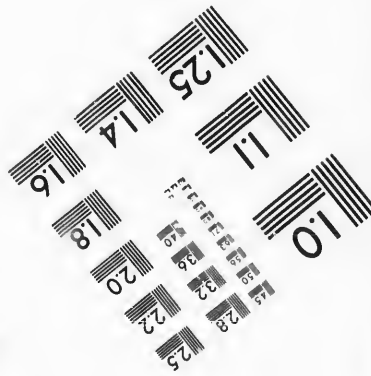
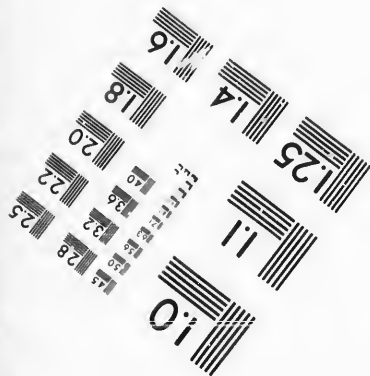
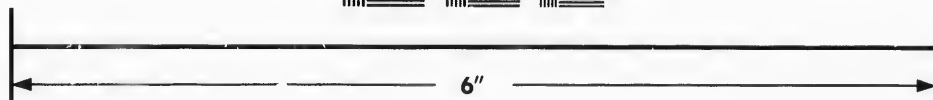
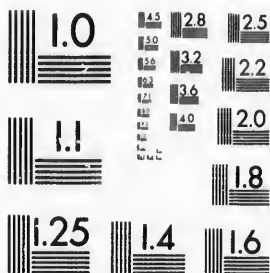


**IMAGE EVALUATION
TEST TARGET (MT-3)**



**Photographic
Sciences
Corporation**

23 WEST MAIN STREET
WEBSTER, N.Y. 14580
(716) 872-4503

Can

**CIHM/ICMH
Microfiche
Series.**

**CIHM/ICMH
Collection de
microfiches.**



Canadian Institute for Historical Microreproductions / Institut canadien de microreproductions historiques

© 1987

Technical and Bibliographic Notes/Notes techniques et bibliographiques

The Institute has attempted to obtain the best original copy available for filming. Features of this copy which may be bibliographically unique, which may alter any of the images in the reproduction, or which may significantly change the usual method of filming, are checked below.

L'Institut a microfilmé le meilleur exemplaire qu'il lui a été possible de se procurer. Les détails de cet exemplaire qui sont peut-être uniques du point de vue bibliographique, qui peuvent modifier une image reproduite, ou qui peuvent exiger une modification dans la méthode normale de filmage sont indiqués ci-dessous.

- | | |
|--|--|
| <input checked="" type="checkbox"/> Coloured covers/ Couverture de couleur | <input type="checkbox"/> Coloured pages/ Pages de couleur |
| <input checked="" type="checkbox"/> Covers damaged/ Couverture endommagée | <input checked="" type="checkbox"/> Pages damaged/ Pages endommagées |
| <input type="checkbox"/> Covers restored and/or laminated/ Couverture restaurée et/ou pelliculée | <input type="checkbox"/> Pages restored and/or laminated/ Pages restaurées et/ou pelliculées |
| <input type="checkbox"/> Cover title missing/ Le titre de couverture manque | <input checked="" type="checkbox"/> Pages discoloured, stained or foxed/ Pages décolorées, tachetées ou piquées |
| <input type="checkbox"/> Coloured maps/ Cartes géographiques en couleur | <input type="checkbox"/> Pages detached/ Pages détachées |
| <input type="checkbox"/> Coloured ink (i.e. other than blue or black)/ Encre de couleur (i.e. autre que bleue ou noire) | <input checked="" type="checkbox"/> Showthrough/ Transparence |
| <input type="checkbox"/> Coloured plates and/or illustrations/ Planches et/ou illustrations en couleur | <input type="checkbox"/> Quality of print varies/ Qualité inégale de l'impression |
| <input type="checkbox"/> Bound with other material/ Relié avec d'autres documents | <input type="checkbox"/> Includes supplementary material/ Comprend du matériel supplémentaire |
| <input type="checkbox"/> Tight binding may cause shadows or distortion along interior margin/ La reliure serrée peut causer de l'ombre ou de la distorsion le long de la marge intérieure | <input type="checkbox"/> Only edition available/ Seule édition disponible |
| <input type="checkbox"/> Blank leaves added during restoration may appear within the text. Whenever possible, these have been omitted from filming/ Il se peut que certaines pages blanches ajoutées lors d'une restauration apparaissent dans le texte, mais, lorsque cela était possible, ces pages n'ont pas été filmées. | <input type="checkbox"/> Pages wholly or partially obscured by errata slips, tissues, etc., have been refilmed to ensure the best possible image/ Les pages totalement ou partiellement obscurcies par un feuillet d'errata, une pelure, etc., ont été filmées à nouveau de façon à obtenir la meilleure image possible. |
| <input type="checkbox"/> Additional comments: Commentaires supplémentaires: | |

This item is filmed at the reduction ratio checked below/
Ce document est filmé au taux de réduction indiqué ci-dessous.

| | | | | | |
|--------------------------|--------------------------|--------------------------|-------------------------------------|--------------------------|--------------------------|
| 10X | 14X | 18X | 22X | 26X | 30X |
| <input type="checkbox"/> | <input type="checkbox"/> | <input type="checkbox"/> | <input checked="" type="checkbox"/> | <input type="checkbox"/> | <input type="checkbox"/> |
| 12X | 16X | 20X | 24X | 28X | 32X |

The copy filmed here has been reproduced thanks to the generosity of:

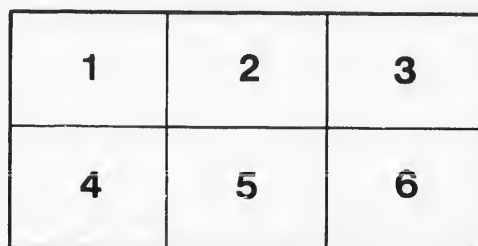
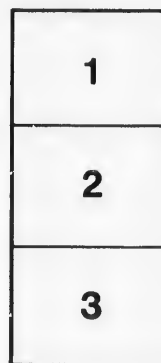
Harold Campbell Vaughan Memorial Library
Acadia University

The images appearing here are the best quality possible considering the condition and legibility of the original copy and in keeping with the filming contract specifications.

Original copies in printed paper covers are filmed beginning with the front cover and ending on the last page with a printed or illustrated impression, or the back cover when appropriate. All other original copies are filmed beginning on the first page with a printed or illustrated impression, and ending on the last page with a printed or illustrated impression.

The last recorded frame on each microfiche shall contain the symbol \rightarrow (meaning "CONTINUED"), or the symbol ∇ (meaning "END"), whichever applies.

Maps, plates, charts, etc., may be filmed at different reduction ratios. Those too large to be entirely included in one exposure are filmed beginning in the upper left hand corner, left to right and top to bottom, as many frames as required. The following diagrams illustrate the method:



L'exemplaire filmé fut reproduit grâce à la générosité de:

Harold Campbell Vaughan Memorial Library
Acadia University

Les images suivantes ont été reproduites avec le plus grand soin, compte tenu de la condition et de la netteté de l'exemplaire filmé, et en conformité avec les conditions du contrat de filmage.

Les exemplaires originaux dont la couverture en papier est imprimée sont filmés en commençant par le premier plat et en terminant soit par la dernière page qui comporte une empreinte d'impression ou d'illustration, soit par le second plat, selon le cas. Tous les autres exemplaires originaux sont filmés en commençant par la première page qui comporte une empreinte d'impression ou d'illustration et en terminant par la dernière page qui comporte une telle empreinte.

Un des symboles suivants apparaîtra sur la dernière image de chaque microfiche, selon le cas: le symbole \rightarrow signifie "A SUIVRE", le symbole ∇ signifie "FIN".

Les cartes, planches, tableaux, etc., peuvent être filmés à des taux de réduction différents. Lorsque le document est trop grand pour être reproduit en un seul cliché, il est filmé à partir de l'angle supérieur gauche, de gauche à droite, et de haut en bas, en prenant le nombre d'images nécessaire. Les diagrammes suivants illustrent la méthode.

A
283.712
C47

MINUTES OF A MEETING
OF THE
EXECUTIVE COMMITTEE
OF THE
SYNOD
OF THE
Diocese of Rupert's Land,
APRIL 7, 1886.

WINNIPEG:
THE MANITOBA PRINTING COMPANY, LIMITED.

1886.



M

In

th
w
d
R
th
V
P
C
t
M
C

a
a
r
n
c
j
a
c

RUPERT'S LAND.

Meeting of the Executive Committee of the Synod of the Diocese.

Interesting Reports Respecting the Missionary Work.

A meeting of the executive committee of the synod of the diocese of Rupert's Land was held in the treasurer's office on Wednesday, April 7, 1886, at 3.30 p.m.

The members present were: The Most Rev. the Metropolitan of Rupert's Land (in the chair), the Very Rev. Dean Grisdale, Ven. Archdeacon Cowley, Ven. Archdeacon Pinkham (secretary), Revs. Canon O'Meara, Canon Matheson, O. Fortin, E. S. W. Pentreath, and H. H. Barber, W. Winram, Esq., M.P.F., A. H. Witcher, Esq., and H. S. Crotty, Esq.

The meeting was opened with prayer.

The minutes of the last meeting were read and confirmed.

The secretary presented the following account of the different missionary meetings recently held in the diocese:

"During the past few months a number of missionary meetings have been held in different parts of the diocese. The chief object in view in holding them was to explain as fully as possible the financial position of the diocese and to encourage church people to increase their contributions in order that the work now in operation might be continued and that means might be found for extending that work to all parts of the diocese.

DEANERY OF ST. JOHN'S.

A meeting was held in St. Paul's Parish on the second of February. It was well attended, Canon Matheson presided and the speakers were, Rev. A. E. Cowley, Mr. J. W. H. Wilson and Archdeacon Pinkham.

DEANERY OF SELKIRK.

The first meeting was held on 1st of Jan. at Headingly, where a new church has been

built free of debt, during the past summer. The deputation consisted of Archdeacon Pinkham and Rev. H. H. Barber. The Rev. A. E. Cowley occupied the chair, and the attendance was fairly good.

The next meeting took place 14th January, at St. James, whose parish church is within the city limits. The meeting which was a good one, was presided over by the rector, Rev. A. E. Cowley, and the deputation consisted of the Rural Dean (Rev. O. Fortin,) and Mr. H. M. Howell, Q. C.

On January 19th and 20th meetings were held at Springfield and Sunnyside respectively. The first of the two meetings was addressed by the Very Rev. the Dean of Ruperts Land and Rev. H. H. Barber, the second by these two gentlemen and Messrs. C. J. Brydges and H. M. Howell. The weather was very cold and members of the deputation suffered from it, but the attendance at the meetings and the interest shown fully made up for any personal inconvenience.

On 19th February, Canon O'Meara and Mr. T. Gilroy addressed a good meeting at Cook's Creek. The chairman at all three meetings was the missionary in charge Rev. G. H. Hooper, whose earnest and constant labors since his appointment more than two years ago are highly esteemed. It may be mentioned that as an inducement to hold these meetings Mr. Hooper on behalf of his people guaranteed \$30 and all expenses of the deputations, and it will be seen that the three collections aggregated more than the sum promised. Considering the number of church people in the mission there is probably no mission in the diocese contributing as large a sum annually for churchwork as this mission. The last harvest thanksgiving collection amounted to \$47.00.

On 3rd of March a meeting was held in St. George's church, Winnipeg, the incumbent, Canon O'Meara, occupied the chair and the meeting was addressed by Archdeacon Pinkham, Canon Matheson and Messrs. Howell and Wilson. There was a fair attendance and a good deal of interest was awakened.

On March 31st a meeting was held in Trinity Hall in connection with the parish of Holy Trinity. The Dean of Rupertsland occupied the chair, and the speakers were Mr. Gilroy, Archdeacon Pinkham, Mr.

Wrigley, Mr. Mulock and Canon O'Meara. There was a good attendance.

DEANERY OF MINNEDOSA.

On 19th January Archdeacon Pinkham, and Rev. E. S. W. Pentreath left home to hold a series of meetings in this Deanery. At Minnedosa they were joined by Rev. Mark Jukes who has since been appointed rural dean. The first meeting was held at Beulah, one of the mission centres of Rev. J. J. Morton, missionary at Birtle who accompanied the deputation. Although the weather was intensely cold there was a good attendance and great interest was shown in the cause. While at Beulah the deputation as well as Mr. Morton were entertained by Mr. George Rowswell, who drove them the next morning while they called on the church families in the settlement and before they set out on their return to Birtle presented the Archdeacon with \$155, \$100 for the Home Mission fund and \$55 for the St. John's College endowment fund.

The evening of the 21st January was spent at Birtle, where there was a good meeting. After it was over the deputation drove to Solsgirth, in order to take the train for Minnedosa the next morning; and on arriving at their destination between twelve and one o'clock they learnt that all the beds in the only hotel in the town, which had been erected since Xmas, were occupied, but they were encouraged by the proprietor to make themselves as comfortable as possible in the sitting room. This they did, two of them wrapping themselves in their fur coats and lying on the floor, one with a log and the other with a chair turned up in true western style, for his pillow, while the third kept the fire going and being unable to sleep spent the weary hours as best he could. Before daylight the train started and arrived at Minnedosa between 8 and 9 o'clock. After breakfast the Archdeacon and Mr. Pentreath, who had spent Monday night on the train owing to the breakdown of the engine, and were now very tired, were glad to get a little rest. The afternoon was spent in calling, with Mr. Jukes on the members of his congregation in Minnedosa. In the evening the missionary meeting was held. Mr. Jukes occupied the chair. The next afternoon the deputation drove to Neepawa, where services are taken by Mr. Jukes. The attendance at the meeting at Neepawa was small. After the mission-

ary meeting there was an informal meeting of the church people, when the erection of a church and the question of obtaining a resident clergyman were considered. Services are at present conducted in the town hall. Mr. Pentreath gave valuable information respecting the purchase of an organ which it was then and there decided should be at once procured. Assurances were offered that the district would raise \$400 towards the support of a resident clergyman. It was stated that there were 83 church families in the county, and the archdeacon promised to do his best to obtain a grant and have a clergyman placed at Neepawa as soon as possible.

DEANERY OF BRANDON.

On March 9th a missionary service was held in St. Mathew's Church, Brandon. The prayers were said by the Rev. E. P. Flewelling, the rector. The lessons were read by Rev. F. F. Davis, curate at Virden, and addresses were made by Rev. C. T. Weatherly, of Alexander. Rev. W. A. Burman, Rural Dean, and Archdeacon Pinkham. There was a fair attendance.

It was intended to hold a meeting at Virden, and the Archdeacon visited the town for this purpose on the 8th March, but owing to delay in receiving the notices of meeting, it was not held.

DEANERY OF MARQUETTE.

Meetings were held at Poplar Point and High Bluff on February 9th and 10th respectively. At each meeting the incumbent (Rev. A. W. Goulding) occupied the chair, and the meetings were addressed by Archdeacon Pinkham and Rev. W. J. Garton, of the Diocese of McKenzie River, who is temporarily in charge of Gladstone. The meeting at Poplar Point was one of the best attended and most enthusiastic meetings that have taken place.

On February 11th there was a meeting at St. Mary's, Portage la Prairie. On this occasion Archdeacon Pinkham, as curate in charge, occupied the chair, and the deputation consisted of Rev. H. H. Barber, Rev. W. J. Garton and Mr. C. J. Brydges.

A mission service was held at Westbourne on 24th March. The prayers were said by Rev. Thomas Cook, incumbent of the parish; the lessons were read by Archdeacon Pinkham, and addresses made by the Archdeacon and Revs. T. Cook and A. W. Goulding. Rev. W. J. Garton was un-

avoidably absent. The little church was full of persons who listened with rapt attention to all that was said.

DEANERY OF DUFFERIN.

On 15th March the Archdeacon and Mr. C. J. Brydges went out to Southern Manitoba. That evening they addressed a meeting at Morden, presided over by Rev. T. N. Wilson, the incumbent and Rural Dean. The people of Morden, the large majority of whom were residing at Nelson a little more than a year ago, have not only removed their houses from Nelson to Morden, but they have moved their church also, and no one who sees it re-erected at the latter place would imagine it had been in existence elsewhere. The deputation made a strong appeal for self support, and are of the opinion that this mission is likely to be successful: not that its people are more numerous than others, but that they are more intelligent and more united among themselves. The deputation would give Mr. Wilson the credit of his labors, not only in the Archdeaconry, but in Southern Manitoba. For some time he was engaged to visit him to this district. On the 15th March there was a missionary meeting at Manitou, and one at Pembina Crossing the next evening. On each occasion the Rev. H. E. Jephson, the missionary in charge, occupied the chair. The rural dean also spoke.

The deputation addressed an excellent meeting at Clearwater, where Rev. C. N. Jeffery resides, on March 18th, and afterwards drove back to Manitou—35 miles—in order to catch the train for Winnipeg the next morning, the team having been most kindly furnished by Mr. R. Rogers.

DEANERY OF LISGAR.

A meeting was held at St. Andrew's on 30th March. The speakers at this meeting were Archdeacon Pinkham, Canon O'Meara, Revs. O. Fortin and E. S. W. Pentreath and Mr. James Taylor. There was a very good attendance. The Rev. A. L. Fortin, incumbent of the parish and rural dean of Lisgar, presided.

A meeting took place at Selkirk on April 1st. Nearly all the gentlemen who had promised to attend as speakers were from various causes unable to be present, and at some inconvenience Canon Coombes kindly arranged at the last moment to accompany Archdeacon Pinkham; Archdeacon

Cowley, who came as a hearer, was also prevailed upon to speak. The chair was ably filled by the incumbent, Rev. N. C. Martin.

This completes for the present our missionary meetings. The accompanying statement shows the amount obtained at each meeting. These sums, although important in the present financial position of the diocese, are of trifling value in comparison with the information that has been given, and the interest in our work and wants that has been created. At the close of a meeting, speakers have been told by some who had been listening to them, that they never before had heard so much about the history and condition of the work in this diocese; that they would be glad if such meetings could be held once a month, and so on. The hands of the clergy, whose parishes and missions were visited, have been strengthened and their hearts cheered, and a strong impetus has been given to the all-important duty of self support, since it has been clearly shown that the sums already withdrawn by English societies indicate further withdrawals at no distant date, and that if the Church of England is to hold her own in Manitoba and the Northwest, she must rise as rapidly as possible to the duty of supplying her own wants without depending upon external aid.

It is hoped that the existing arrangement of deaneries and their better organization will facilitate the holding of such meetings annually, and, as far as possible, throughout the Diocese."

Statement of collections at missionary meetings:—

| | |
|------------------------------|----------|
| St. Pauls | \$ 7 50 |
| Headingley | 8 50 |
| St. James | 8 00 |
| Springfield | 8 50 |
| Sunnyside | 15 10 |
| Cook's Creek | 12 00 |
| St. George's, Winnipeg | 25 75 |
| Holy Trinity, " | 37 00 |
| Beulah | 18 20 |
| Birtle | 12 38 |
| Minnedosa | 10 60 |
| Neepawa | 3 25 |
| Brandon | 13 50 |
| Poplar Point | 8 75 |
| High Bluff | 8 00 |
| Portage la Prairie | 24 15 |
| Westbourne | 5 60 |
| Morden | 16 00 |
| Manitou | 9 20 |
| Pembina Crossing | 6 40 |
| Clearwater | 23 50 |
| St. Andrews' | 8 00 |
| Selkirk | 6 35 |
| Total | \$296 13 |

On motion of Mr. Winram, seconded by Mr. Whiteher, it was resolved, that a cordial vote of thanks be given to those gentlemen who have been speakers at these missionary meetings.

An application from Rev. H. E. Jephson for a grant from the S. P. C. K. block grant towards the cost of a church at Musselborough, was considered, and on motion of Mr. Winram, seconded by Rev. E. S. W. Pen-treath, it was resolved that a grant of £32 be made for this purpose. The church will seat about 120 and will cost about \$800. It is to be erected at once, and will, it is said, be free of debt.

A letter was read from Rev. P. Owen Jones, rector of St. George's church, Ottawa enclosing \$42—the first monthly payment of the sum the Dorcas society of the congregation has decided to send as a grant for the missionary at Rounthwaite and Millford; and on motion of Archdeacon Pinkham, seconded by Dean Griedale, it was unanimously resolved:

That the Executive Committee of the Synod of the Diocese of Rupert's Land, hereby offers its most grateful thanks to the rector and congregation of St. George's Church, Ottawa, for their great kindness in supplying the grant towards the support of the missionary at Rounthwaite and Millford—one of the ten vacant missions for whose needs the committee recently issued an appeal—and would express its earnest hope that in this time of great need for the diocese, other congregations in Eastern Canada may be prevailed upon to do likewise.

Letters, or portions of letters, from Revs. Dr. Mockridge, W. C. Bradshaw, A. G. Pinkham, M. Jukes, T. C. Coggs, W. A. Burman, W. J. Garton, and Mr. R. T. Rokey were then read.

Rev. W. Burman drew attention to the receipt by him of \$57.00 from the congregation of St. James' Church, Goderich, Ont., through Mr. John Middleton, for the building fund of a new church for the Sioux Mission.

The following statements were then presented:—

Sums actually collected by Ven Archdeacon Pinkham during his recent visit to Eastern Canada.

DIocese of Toronto.

Toronto.

| | |
|--------------------------|-------|
| A. H. Campbell | 25 00 |
| Perkins, Ince & Co. | 10 00 |
| Mrs. R. G. Dalton | 10 00 |
| Fred. K. Perkins | 10 00 |

| | |
|---|-----------------|
| Henry Canthra | 25 00 |
| J. W. G. Whitney | 25 00 |
| G. B. Oler | 20 00 |
| E. H. Bahroo | 15 00 |
| E. F. Hebdien | 25 00 |
| E. Gunderham | 25 00 |
| B. H. Dixon | 20 00 |
| Joseph Canthra | 10 00 |
| Mrs. J. Canthra | 10 01 |
| Sheriff Jarvis | 10 02 |
| A friend | 5 00 |
| Mr. Brough | 2 00 |
| Mr. McDonald | 2 00 |
| A friend | 1 20 |
| A friend | 2 00 |
| John Cutto | 1 00 |
| Powesil & Hutchings | 2 00 |
| A lady | 2 00 |
| Mrs. Dalton | 5 00 |
| Mrs. Wilson | 5 00 |
| John Hague | 5 00 |
| T. Till | 5 00 |
| S. G. Wood | 2 00 |
| J. A. Worrell | 3 10 |
| Mrs. Piordan | 5 00 |
| J. Gillespie | 5 00 |
| A lady | 5 00 |
| Thomas Hodgins | 2 00 |
| G. Holmstead | 2 00 |
| C. H. Teut | 2 00 |
| J. Sloan and F. W. Masch | 1 00 |
| Mrs. Miller | 5 00 |
| Allan MacDougall | 5 00 |
| H & C. Blachford | 5 00 |
| Mrs. Edmund Bady | 5 00 |
| Chief Justice Haggarty | 5 00 |
| Mrs. W. A. Baldwin | 5 00 |
| Col. Gzowski (sent to the Bishop) | 50 00 |
| Total | \$107 00 |

PETERBOROUGH.

| | |
|-----------------------|-----------------|
| Rev. V. Clement | 5 00 |
| J. A. Hammond | 5 00 |
| Robert Morrow | 10 00 |
| A. P. Pousette | 5 00 |
| Dr. Boucher | 5 00 |
| T. J. Halliday | 5 00 |
| D. Ulyott | 5 00 |
| Mr. Vernon | 5 00 |
| E. J. Toker | 2 00 |
| Mr. Sherwood | 1 00 |
| Mr. Ruddy | 50 |
| Total | \$ 48 50 |

DIocese of Ontario.

Ottawa.

| | |
|-----------------------------|-------|
| A Lady | 10 00 |
| H. J. Neel | 10 00 |
| G. W. Wickstead | 5 00 |
| W. H. Wright | 5 00 |
| T. H. Perley | 5 00 |
| W. H. Rowley | 5 00 |
| G. A. Motherwell | 5 00 |
| Mr. Wickstead | 5 00 |
| Hon. J. Carling | 5 00 |
| Dr. H. P. Wright | 5 00 |
| Dr. Hill | 1 00 |
| Mrs. Lewis | 3 00 |
| Messrs. F. & J. Grant | 2 00 |
| Mrs. Macdougall | 5 00 |
| Miss Chesley | 2 00 |
| Mrs. Rowan Legg | 2 00 |
| J. E. Parker | 1 00 |

| | |
|------------------------------------|-----------|
| Gipsy | 1 00 |
| Mrs. O'Meara | 2 00 |
| A Lady | 1 00 |
| C. H. Pinhey | 1 00 |
| A Friend | 5 00 |
| March 11. Rev. P. Owen Jones | 42 00 |
| Total | \$ 131 00 |

DIocese of NIAGARA

Hamilton.

| | |
|-------------------------|---------|
| Mrs. Fuller | 15 00 |
| V. S. Fuller | 10 00 |
| C. Bartlett | 5 00 |
| W. E. Sanford | 5 00 |
| F. W. Gates | 10 00 |
| Mrs. O'Reilly | 2 00 |
| A friend | 25 |
| E. Brown (cheque) | 12 00 |
| Total | \$50 25 |

TOTAL CASH RECEIPTS.

| | |
|-----------------|----------|
| Toronto | \$ 07 00 |
| Peterboro | 48 00 |
| Ottawa | 131 00 |
| Hamilton | 59 25 |

Grand Total

Sums promised in Ottawa: Rev. P. Owen Jones, \$12 per month for Roushwaite and Millford, estimated for 11 months \$102; Collection meeting of Women's Auxiliary, \$22. In Toronto: S. H. Burke, \$25; C. J. Campbell \$25; N. W. Hoyles, \$10. In Hamilton: Mrs. Hamilton, \$5. Total

Sums actually collected by Rev. Caen O'Meara during his visit to Nova Scotia.

DIocese of NOVA SCOTIA.

Halifax.

| | |
|-------------------------------|-------|
| T. A. Brown | 50 00 |
| Archdeacon Gilpin | 10 00 |
| Dr. Bennett | 10 00 |
| C. T. Strong | 10 00 |
| T. A. Ritchie | 30 00 |
| Malem Bros | 10 00 |
| R. J. Wilson | 5 00 |
| R. Taylor | 5 00 |
| W. C. Silver | 5 00 |
| P. Lynch | 5 00 |
| Mr. Dunbar | 5 00 |
| Mr. Poyant | 5 00 |
| A. Shortt | 5 00 |
| G. R. Shortt | 5 00 |
| R. Unlache | 5 00 |
| Mrs. Gilpin | 5 00 |
| Rev. Mr. and Miss Crisp | 5 00 |
| J. Tremaine | 5 00 |
| Mr. Shrovo | 5 00 |
| Mr. Bland | 5 00 |
| Mr. Franklin | 5 00 |
| Judge Ritchie | 5 00 |
| W. N. Silver | 3 00 |
| Mrs. Morrow | 3 00 |
| Rev. Dr. Patridge | 2 00 |
| S. H. Shrovo | 2 00 |
| A. J. Jones | 2 00 |
| J. Minger | 2 00 |
| Mrs. Hersiem | 2 00 |
| Mr. Blackader | 2 00 |
| W. B. Slayter | 2 00 |
| B. A. Smith | 2 00 |

| | |
|----------------------|------|
| Mr. Davidson | 2 00 |
| W. Kent | 2 00 |
| J. Fortine | 1 00 |
| Mr. Vizzard | 1 00 |
| Mr. Stubbog | 1 00 |
| Mr. Symond | 1 00 |
| G. H. Williams | 1 00 |
| D. H. Whiston | 1 00 |
| Dr. Prior | 1 00 |
| C. W. Rennels | 1 00 |

Total

Charlottetown.

| | |
|-----------------------------|-------|
| Mrs. Admiral Bayfield | 15 00 |
| T. H. Caudal | 10 00 |
| T. W. Halls | 5 00 |
| C. Palno | 5 00 |
| P. Pope | 5 00 |
| W. H. Batt | 5 00 |
| Mrs. F. J. Newbury | 5 00 |
| J. E. Grant | 5 00 |
| J. Ingles | 5 00 |
| Judge Hensley | 3 00 |
| Mrs. T. L. Hazard | 1 00 |
| C. C. Snudd | 2 00 |
| Mrs. A. Brown | 2 00 |
| Mrs. W. F. Maxwell | 2 00 |
| Mrs. L. H. Davies | 2 00 |
| Mrs. Ingles | 1 00 |
| Mrs. L. H. Davies | 1 00 |
| Mrs. J. Longworth | 1 00 |
| H. M. Hooper | 1 00 |
| G. W. Peake | 1 00 |
| J. Fitzgerald | 1 00 |
| J. Ball | 1 00 |
| G. W. DeHolis | 1 00 |
| D. Sloggett | 1 00 |
| Dr. Robins | 2 00 |

Total

Yarmouth.

| | |
|--------------------------|-------|
| Mrs. C. L. Moodie | 10 00 |
| Mrs. C. L. Moodie | 5 00 |
| Mrs. Stanley Brown | 5 00 |
| J. W. H. Rowley | 3 00 |
| J. B. Gray | 2 00 |
| Mr. Viets | 2 00 |
| F. M. Viets | 2 00 |
| J. W. Moodie | 2 00 |
| Miss S. F. Moodie | 2 00 |
| A. Murray | 2 00 |
| H. S. Almon | 2 00 |
| Miss Moody | 1 00 |
| T. Sutton | 1 00 |
| Mrs. Sutton | 1 00 |
| Miss J. K. Miller | 1 00 |
| Miss A. G. Mhtar | 1 00 |
| Miss C. Lawson | 1 00 |
| Miss E. Grey | 1 00 |

Total

TOTAL CASH RECEIPTS.

| | |
|---------------------|----------|
| Halifax | \$236 00 |
| Charlottetown | 86 00 |
| Yarmouth | 41 00 |

Grand total

The majority of these are subscriptions for three years.

The following reports were then read:—
(a) From Rev. G. H. Hooper, Springfield.

"I send in a report of my work. I think I can state some progress. Several changes have taken place during the past year. Some of our families have gone to other places, seriously weakening one station in numbers and financial support. Last year I commenced a service in three stations every Sunday. The result has been very satisfactory; a more regular attendance has been obtained. I find it difficult to carry on these services, but with the exception of the time when diphtheria was in my family and one Sunday that I was sick in bed, I have not missed a Sunday since I commenced. I begin the 1st service at 10:30 a. m., the 2nd at 2 p. m., the third at 4:30 p. m. I cannot have a service any later. The people have large stocks to look after and wish to be home on time to attend them. The round journey for me is 22 miles. I have had 10 baptisms, 4 funerals, 2 weddings and 3 confirmed. I believe I am doing as much on Sunday as I can, but there is so much more to be done, that I seem at times to be doing nothing at all. There are so many places round where scattered members of our church are living and where service ought to be held that I frequently get discouraged at the small amount of work done. I have offered several times to go to these places on week days and hold service, but this does not seem to be what is required. Few people like to go far over the prairie at night. A Sunday service is the only way to reach them, and I cannot give it just now. I hope shortly to get a lay reader, and if I do, we can between us take up two or three other townships and give at least a fortnightly service, I going once a month and the lay reader once a month. I do not see any other way at present of giving these scattered ones the means of grace.

"I think the people of this mission have shown that they appreciate the work carried on amongst them. In spite of the depression of trade and failure of crops, the church wardens have sent to the mission fund \$82.60 since Thanksgiving Day. This speaks more than words of mine. For my own part, I must say I have received the utmost kindness and good-will since my appointment. One great want in this mission is a parsonage. It is a serious inroad on a small salary to have to pay \$72 a year rent for a house. We cannot as yet see our way clear to do anything towards building. We would be very glad indeed if some steps

could be taken to supply this want. If our crops are good this year, I think a start could possibly be made, but it will be some time, even with good crops, before we can build a house without assistance.

"Our people, as you know, are not like settlers in Eastern Canada. Most of them only commenced a little while ago. They started, in many cases, with little or nothing, and when crops failed they had nothing to fall back upon. Still I do not think there are many missions in any place, as weak in numbers as we are, which can show a better record.

"My work for the year may be stated briefly thus: Three services Sundays; holy communion once a month; parochial visits during the week as frequent as possible. This, I suppose, is something, but how much remains undone! Plympton, Milbrook, Richland, Caedonia, Rosedais, Clear Springs, Woodridge and other townships are sadly in need of a clergyman's services on Sunday. Where is he to come from? With a lay reader's help I think I can take three of them, but I cannot alone. The people are so scattered that I cannot reach more than three places on Sundays, and it is very hard to do that when the roads are bad. People in the east do not understand the difference in our roads and theirs. I have frequently had three services in Ontario, and driven thirty-three miles, and not had such hard work for myself or horse as 22 miles gives here. I feel a great reluctance to send any report. Whenever I sit down to write of what I am doing, what I am not doing and what ought to be done gets uppermost in my mind. A report of that kind would be the easiest written. We had a visit from the Bishop last summer, the only break in the monotony of country life since I have been here. We were all very much pleased to see his Lordship and I should think the interest shown by the people would be gratifying to him. We hope to see him again soon."

(b) From Rev. W. Langham Cheney, Rounthwaite.

"The following is a report of my work during the past month in the district of Milford and Rounthwaite:

"Milford is a place started in prospect of a railroad which has not yet been constructed.

"Rounthwaite is a beautiful country district about 17 miles south of Brandon, with

a v
bet
yea
far
ate
am
and
it w
3.3
mi
ing
to a
hav
and
serv
afte
anc
"
tim
poi
Arr
she
dist
bec
"
me,
hav
farm
to b
(o
ther
taki
in a
M
Can
Th
com
Rup
A. H
succ
for n
M
Can
Th
exec
ond
July
pres
Ar
low
a res
in ev
expe
num

Th

a very fine church built by English settlers between three and four years ago, but three years of bad crops, and some well-to-do farmers leaving to take up second homesteads, a debt remains on the church to the amount of \$800.

"These districts are about 14 miles apart and have a service every Sunday. At first it was, Millford 11 a.m., and Rounthwaite 3.30 p.m. The people in the last named mission are very much scattered, some having a drive of 10 miles, the average from 3 to 4 miles.

"To suit the people south of Millford we have altered the services. Now Millford and Rounthwaite take it in turns, and have service in the morning one Sunday, and afternoon the other, with very fair attendance.

"As Easter this year comes about seeding time, we have called a meeting and appointed officers for the coming year. Arrangements were also made to build a shed for the comfort of horses driven from a distance, and already several members have been energetic in supplying material.

"As this part of the country is new to me, and the roads in a very bad state, I have not been able to visit more than 20 families, but hope by the end of the month to be better acquainted with our people."

(c) A report was read from Rev. C. T. Weatherley, who has no regular work, but is taking services in a few places not included in any existing mission.

Moved by Dean Grisdale, seconded by Canon Matheson and resolved:

That the cordial thanks of the executive committee of the synod of the diocese of Rupert's Land be hereby offered to Mr. T. A. Hanbury, who has very effectively and successfully taken Sunday services at Morris for more than a year past.

Moved by Rev. O. Fortin, seconded by Canon O'Meara, and resolved:

That the regular quarterly meeting of the executive committee take place on the second Wednesday in April (after this year), July, October and January, instead of the present dates of meeting.

Archdeacon Pinkham submitted the following notes of districts where the need of a resident clergyman is most pressing and in every one of which the people may be expected to give from \$300 to \$400 per annum towards his stipend.

1. NORQUAY.

The mission of which Norquay is the chief

place embraces the townships of Swan Lake, Beaconsfield, Somerset, etc. etc., in the Municipality of Lorne, in the Deanery of Dufferin. It will be vacant at Easter. There is an excellent parsonage at Norquay mainly built from contributions received in former years from St. James' Cathedral, Toronto, and a mission church at Swan Lake; and preparations have been made for the erection of a church at Beaconsfield. Four years ago St. James' Cathedral, Toronto, promised the grant for this mission, but for the past two years the total amount sent has been \$167.58 only, received last year.

2. GLADSTONE.

Gladstone is a village on the Manitoba and Northwestern Railway, between 30 and 40 miles from Portage la Prairie, in the Deanery of Marquette. The mission embraces townships 13 to 18 in ranges 11 and 12. There is a parsonage, on which there is a debt of nearly \$900. There is no church. It will be vacant after Easter.

3. NEEPAWA.

Neepawa is a thriving village on the Manitoba and Northwestern railway 61 miles from Portage la Prairie and 117 miles from Winnipeg, in the Deanery of Minnedosa. It is the county town of the county of Beautiful Plains, one of the finest agricultural districts in Manitoba. The country about the town is well settled. There are between 80 and 90 church families in the county. Fortnightly services have been held for some time at Neepawa and at Glendale, a settlement about thirteen miles S W of Neepawa, by the clergyman who resides at Minnedosa, but there are other settlements nearer Minnedosa requiring his attention as soon as arrangements can be made for a resident clergyman at Neepawa. The clergyman to be stationed at Neepawa would have for the present to minister to all the church people in the county. Preparations are being made for the erection of churches at Neepawa and Glendale. \$400 will be contributed towards the support of a resident clergyman. There is no church or parsonage.

4. OAK LAKE.

Oak Lake is a growing village on the Canadian Pacific Railway, 35 miles west of Brandon. It is the centre of a most excellent agricultural district. The proposed mission of Oak Lake would adjoin the Virden mission on the west, and embrace the

village of Griswold, eight miles east; the Blair school district, about eight or nine miles northwest of Oak Lake village; the settlers around the lake itself, some ten miles south of the village, and a settlement on the Pipestone Creek, about fifteen miles distant. There is no church or parsonage in the district. The people are taking steps to raise half the stipend required. Archdeacon Pinkham held a meeting for organization and services in the district recently. The services were hearty and there was a large attendance. Oak Lake is in the Deanery of Brandon.

5—RUSSELL.

The municipality of Russell is an important district in the county of the same name, in the deanery of Minnedosa. There are three small villages in the municipality, viz., Russell, Shellmouth and Assissippi. A clergyman had charge of the district for some time. He resigned last autumn. There is no church or parsonage in the district.

6—CARBERRY.

Carberry is a village on the main line of the Canadian Pacific Railway, between Portage la Prairie and Brandon, in the Deanery of Brandon. There are a number of church families in Carberry and the vicinity, and the large district of which the village is the centre ought to be occupied at once. At the present time no services are held in the whole district.

7.—KILLARNEY.

The Municipality of Turtle Mountain ought to have a resident clergyman at once. At the present time monthly services are taken at Wakopa and Killarney by the missionary at Clearwater. Killarney is in the Deanery of Dufferin.

There are other large districts which should have regular services."

His Lordship then pronounced the benediction and the meeting was adjourned.

ST. MARY'S, PORTAGE LA PRAIRIE, A SELF-SUPPORTING PARISH.

The members of St. Mary's congregation, Portage la Prairie, have recently petitioned the Bishop to appoint the Rev. C. N. F. Jeffery, B.A., B.D., to be their pastor, and have guaranteed \$900 of stipend for the first year, with the hope of an increase thereafter.

This parish was for years a C. M. S. mission. Church work was begun in the year 1855 by the late Archdeacon Cochran, who died there ten years afterwards and was succeeded by his son-in-law, the late Rev. H. George, who was incumbent of the parish at the time of his death in 1881. He was succeeded by Rev. A. L. Fortin, now incumbent of St. Andrew's. Towards Mr. Fortin's stipend the Church Missionary Society gave till the end of 1884 £100 sterling per annum. During the portion of last year that Mr. Fortin was in charge a grant was given from the Home Mission Fund. Since Mr. Fortin's resignation services have been taken every Sunday chiefly by the cathedral clergy and Rev. H. T. Leslie. For some months the Dean of Rupert's Land was curate in charge, but on Archdeacon Pinkham's return from England the dean resigned that position to him. The officiating clergyman has usually spent as much of each Saturday and Monday as was available in parochial visitation.

The new rector, who is to enter upon his duties on Easter Day, is a graduate in arts and theology of the University of Manitoba, and an alumnus of St. John's College, in this city. Since his ordination, not quite two years ago, he has had charge of the mission of Clearwater, in Southern Manitoba.

St. Mary's is the fifth congregation in the diocese, whose rector is entirely supported by the congregation without any aid from endowments, the others being Holy Trinity, Christ Church, and All Saints', Winnipeg; and St. Matthew's, Brandon.

The Rev. A. W. Goulding, B. D., has resigned the incumbency of Poplar Point and High Bluff, and has been placed by the Bishop in charge of Stonewall and Victoria. Mr. Goulding has also received the appointment of Protestant Chaplain of the Manitoba Penitentiary. He will reside at the Stony Mountain.

Rev. A. G. Pinkham, missionary at Norway, etc., in Southern Manitoba, has resigned his position in the diocese, and has accepted a charge in the diocese of North Dakota. He leaves after Easter.

nu
the
an,
was
ev.
bar-
He
now
Mr.
ary
100
tion
in
ome
gna-
day
H.
n of
t on
land
nim.
pent
y as

h his
arts
coba,
e, in
quite
the
lani-

n the
orted
from
nity,
ipeg;

as re-
t and
e Bis-
toria.
point-
Mani-
at the

t Nor-
, has
nd has
North

